

MinnowBoard Max x86 Support Package for Windows® 10 and Windows® 10 IoT Enterprise

By Sean D. Liming

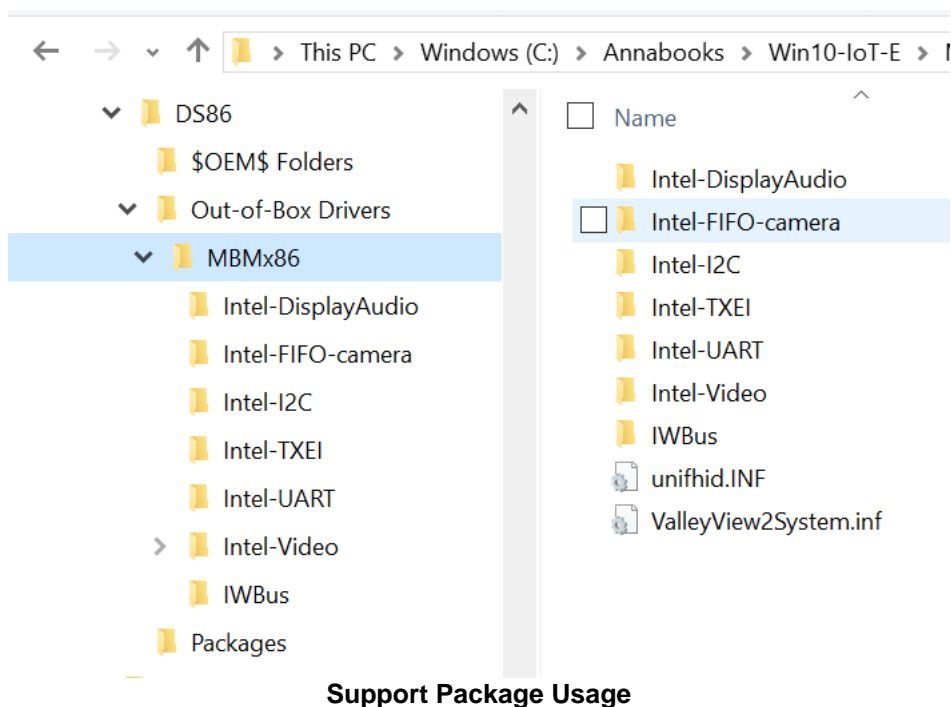
May 2016

This support packages contains the Windows 10 x86 drivers for the MinnowBoard Max/Turbot (MBM) running Windows 10 or Windows 10 IoT Enterprise. The package is not for use with Windows 10 IoT Core. Please go to windowsondevices.com for more information on Windows 10 IoT Core support. The package is intended for use with Windows System Image Manager (SIM). The steps below provide the basic steps to integrate the drivers into a custom OS installer using SIM. For more information on the full SIM development process, please see the book [Starter Guide for Windows® System Image Manager](#). The support package contains the following drivers:

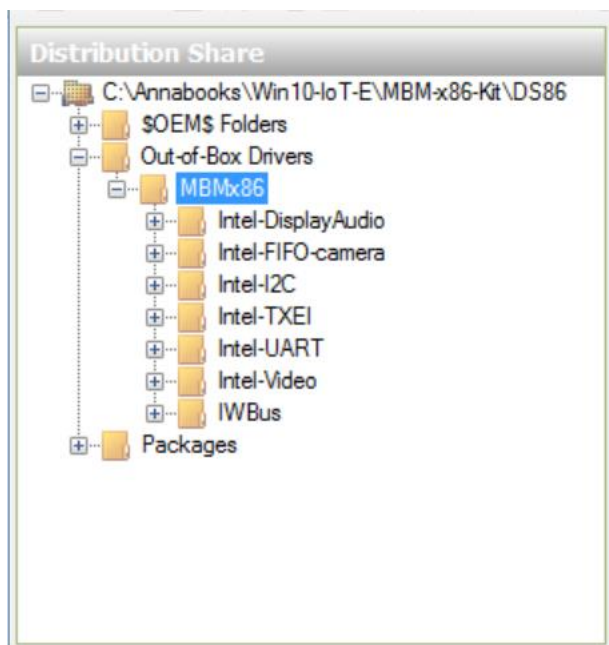
- Intel-Video
- Intel-DisplayAudio
- Intel-FIFO Camera
- Intel Trusted Execution Engine Interface
- IWD Bus Enumerator
- Intel Chipset
- Intel I2C
- Intel UART

Note: The package is an example only, and the drivers supplied might not be the latest drivers available. Please see the manufacture for any updates. The package serves as guide for integration with the OS using SIM.

1. Make sure that the MinnowBoard Max/Turbot has the latest 32-bit firmware is installed.
2. Open SIM
3. From the SIM menu, open the Windows 10 32-bit catalog file.
4. From the SIM menu, create a new answer file
5. From the SIM menu, create a new distribution share
6. In File Explorer, copy the MBMx86 folder to the new distribution share's Out-of-Box Drivers folder.



7. In SIM, under Out-of-Box Drivers, right-click on **MBMx86** and select **Insert Driver Path to Pass 2 offlineServicing**.



8. Finish the answer file with any settings
9. Create the configuration set
10. Use diskpart.exe to format a USB flash disk with FAT32. The current MBM UEFI firmware doesn't support NTFS for the installation disk.
11. Copy the configuration set and the contents of the Windows 10 IoT Enterprise (aka Windows 10 Enterprise LTSC) ISO/DVD to the USB flash disk.

Note: If you are using an external SATA hard drive, you will have to supply a separate power supply for the SATA drive. It is best to power the drive before powering the MinnowBoard Max/Turbot. For mSATA expansion lures, the mSATA lure may or may not need extra power. Please contact the lure manufacture for more information.

12. Plug the USB drive into the MinnowBoard Max/Turbot, and boot the system.
13. Go into the BIOS and setup the boot order to boot the USB flash disk first and the hard drive second.
14. Save the changes and boot the system to the USB flash drive and install the OS.

There will be one missing driver for ACPI\MSFT8000. There is little information on what this device is. Based on Windows IoT Core, it is used with SPI/I2C test applications.