

Installing XP Embedded on Vista notes

By Sean D. Liming
Managing Director
SJJ Embedded Micro Solutions

July 2007

Having recently moved to Windows Vista, setting up the Windows XP Embedded tools was a bit of a challenge. Some information is a bit scattered on the web. To bring some of these items together, here is some information about installing and running Windows XP Embedded tools on Windows Vista.

I will update this white paper as new information is discovered. Please e-mail me if you run into any interesting setup issues.

Registering Vbscript.dll and Jscript.dll

If you purchase a machine with Windows Vista pre-installed, you may have to register vbscript.dll and jscript.dll. You will want to do this before installing any software.

1. Open CMD.EXE in Administrative mode
2. Change directory to the \windows\system32
3. Run regsvr32 vbscript.dll
4. Run regsvr32 vjscript.dll
5. Reboot the system

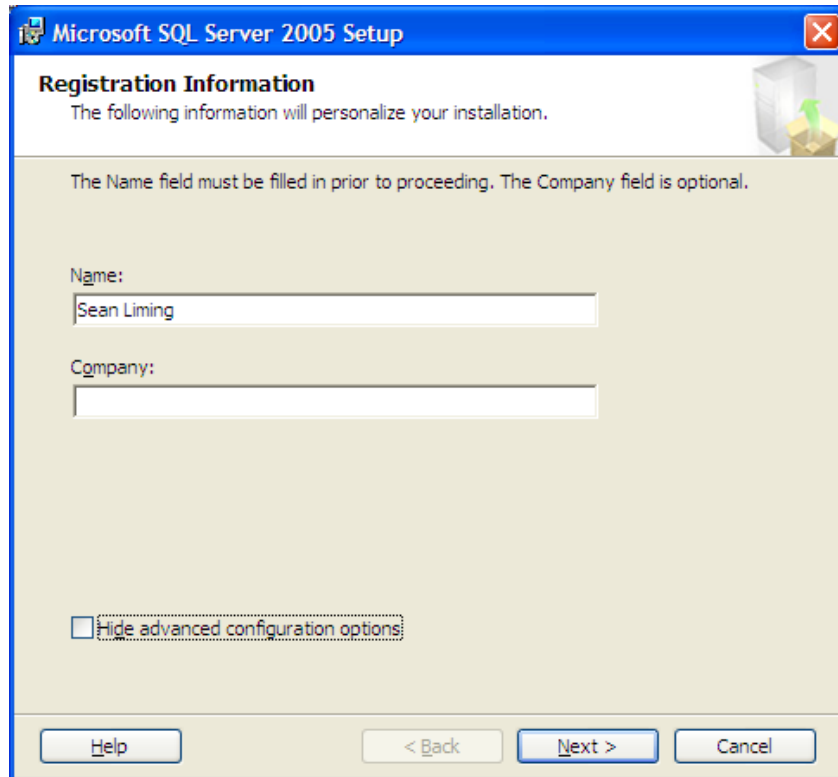
SQL Server 2005 Express Edition Setup

MSDE which comes with the XP Embedded installation CD's should NOT be installed as the database engine. According to Sarah Ali's posting on the XP Embedded Team Blog, you will want to install SQL Server 2005 Express Edition:

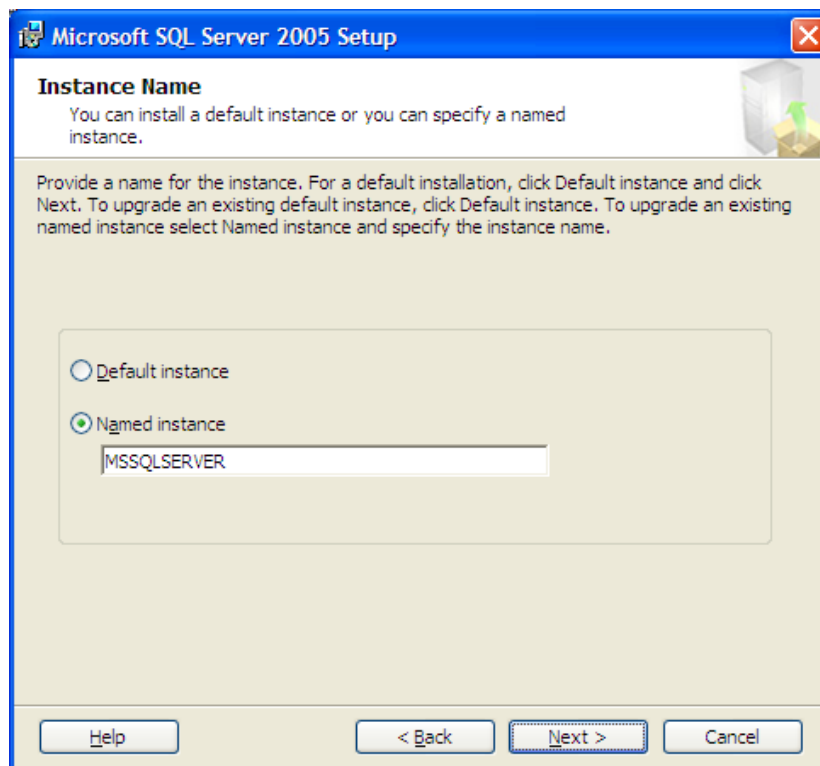
<http://msdn.microsoft.com/vstudio/express/sql/download/>

You might want to consider downloading the "Install Microsoft SQL Server 2005 Express Edition with Advanced Services" version since it will provide better views into the database tables.

The trick with using SQL Server 2005 Express Edition is to change the instance name to MSSQLSERVER during installation. In order to get to the option, you have to watch the install wizard screens carefully, and uncheck "Hide advanced configuration options" when it appears in order to access the name change.



Uncheck to Access Advanced Options

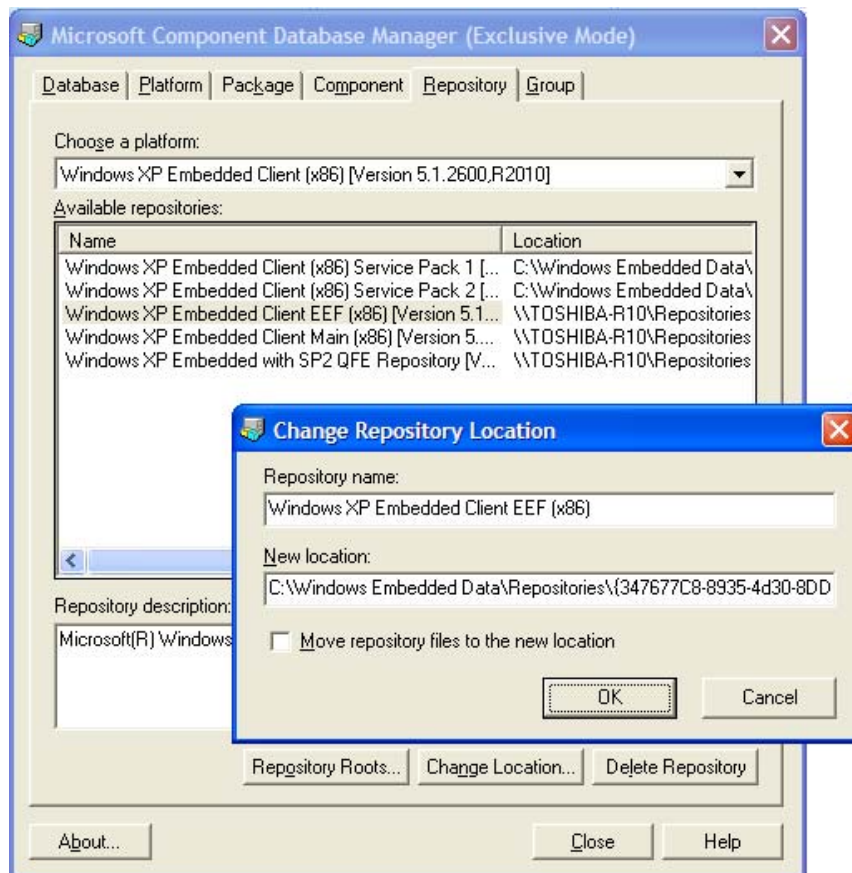


Change Instance name to MSSQLSERVER

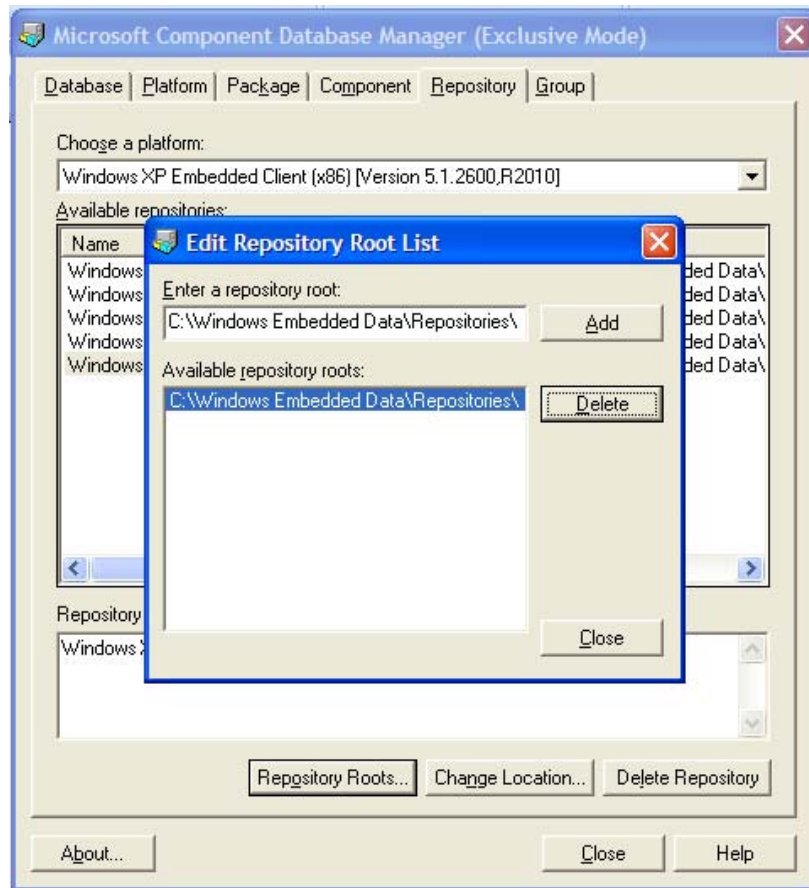
Windows® XP Embedded Tools Setup

You will need to install the XPe tools after you have installed SQL Server 2005 Express Edition. There are several CD that make up the installation; including the new Update Rollup 1.0. Here are the steps for installation:

1. SP1 - Insert CD 1 and install the tools. Do not install MSDE.
2. Insert CD 2 and install the database
3. Optional: At this point, you might want use Component Database Manager to change the repository root path and roots be replacing the share \\<computer>\Repositories with c:\Windows Embedded Data\Repositories.

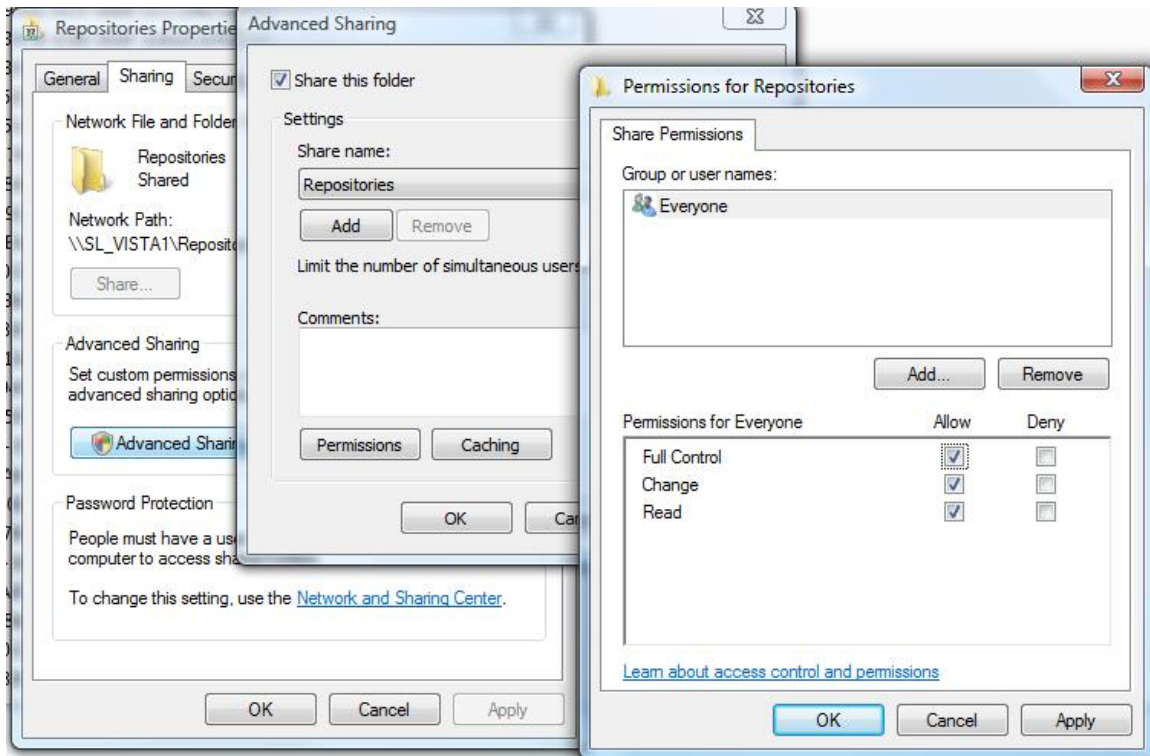


Change the roots of the Repositories



Change all future Repository roots to the static location

4. SP2 - Insert CD 3 and install the tool updates. Do not install the database engine update.
5. Install the Database updates
6. FP2007 – Insert CD 4 and install the tool updates
7. Install the Database updates
8. Reboot the system
9. Update Rollup 1.0 – run the XPeRollup1.exe to update the database. You will have to run this installation in Administrative mode.
10. Finally, you will need to change the sharing permissions on the c:\Windows Embedded Data\Repositories folder so you have full read and right access. In File Explorer, right click on the folder and select Share...
11. Click on the Advanced Sharing button and accept the administrative access message.
12. Click on Permissions
13. Either add your account to the list with Full Control permissions or change the Everyone account with Full Control.
14. Click OK on all the dialog boxes to apply the change.



Setting the correct Permissions to the Repositories Folder

Target Designer Running as Administrator

At a minimum Target Designer needs to be run as Administrator.

1. Open File Explorer
2. Go to the \Program Files\Windows Embedded\bin folder
3. Right click on TDesign.exe and select **Run as Administrator** from the context menu.

Installing the Help Update files

Administrative rights are needed to install the help files or **Access Denied** will appear when the install tries to copy the files to the \Program Files\Windows Embedded\help folder.

1. Right click on the XPeRollup1Help.exe
2. Select **Run as Administrator** from the context menu
3. Click on a key to install the help files.

Installing the FBWF API Update

Administrative rights are needed to install the help files or **path not found** will appear when the install tries to copy the files to the \Program Files\Windows Embedded\help folder.

1. Right click on the XPeRollup1Api.exe
2. Select **Run as Administrator** from the context menu
3. Close the command windows when finished. The new FBWF API files will be copied to the \Program Files\Windows Embedded\FBWFAPI.

CF and USB Flash Boot Setup

Booting XPe from USB flash disk is a great new feature that was added in Feature pack 2007. Now, preparing the USB flash disk to boot XPe gets easier with Windows Vista. You no longer have to use the ufdprep utility to prepare the USB flash disk.

Dave Baker listed a solution to use Diskpart to prepare the flash disk on his blog site: <http://blogs.msdn.com/davbaker/archive/2006/12/06/creating-xp-embedded-usb-bootable-images-from-vista.aspx>

Same solution goes for Compact Flash. You can now format the CF card in Vista and the boot sector will be added. No need to run bootprep.

All you really have to do is:

1. Open file File Explorer
2. Right click on the CF or USB flash disk
3. Select format from the context menu. The format process will lay down the boot sector, which was not the case in Windows XP Pro.
4. The only trick here is that the Vista boot sector is laid down. The Vista boot sector looks for BOOTMGR instead of NTLDR. In your XPe image, all you have to do is rename NTLDR file to BOOTMGR and the image should work fine.